

TOWN OF MOUNT GILEAD
PO BOX 325
MOUNT GILEAD NC 27306

FIRST CLASS MAIL
US POSTAGE PAID
MT GILEAD, NC 27306
PERMIT NO.5

This Quarterly Newsletter is being provided in an effort to keep our Town Residents and Utility Customers informed of any events and important information happening in our area. Inside, you will find News, Information, and Helpful Tips. If you have any nonprofit News or Events in the area that you would like to see published, please let us know.

MOUNT GILEAD NEWS

Moving Ahead TOGETHER



**TOWN OF MOUNT GILEAD
110 WEST ALLENTON STREET / PO BOX 325
MOUNT GILEAD NC 27306
910-439-5111 M-F 8AM-5PM**

WWW.MTGILEADNC.COM

Oct-Nov-Dec 2023

ISSUE 10-23



" As my term as Mayor is coming to a close, I'd like to say to the citizens of Mt. Gilead , Thank you; thank you for allowing me the opportunity to serve you. It was an honor and a privilege. It was a pleasure to work with the Board and especially the Town Manager, the youngest and smartest young manager. It is truly a pleasure to work with the staff. I want the staff and Town Manager to keep up the good work and keep the future of the town in mind.

Yours Truly,
Mayor Beverly A. Harris"





Leaf pick up will start the week before Thanksgiving, and will stop a week before Christmas. If you have any questions or concerns contact Town Hall at 910-439-5111.

Mount Gilead Concerned Citizens and Community Watch meet the second Thursday of every month at 7pm. The location varies between the Fire Department and Highland Community Center. If you have any questions please contact Johnny Greene.

Questions, concerns, ideas? Let Mount Gilead's leaders know!! Town Manager Dylan Haman, the Mayor and Commissioners meet every first Tuesday of the month at 7pm at Highland Community Center, 131 Hoffman Road. During the meeting there is a public comment section that will let you make your concerns known.

Quarterly Calendar:

Oct 9th- Columbus Day

Oct 31st- Halloween

Nov 11th- Veterans' Day

Nov 23rd- Thanksgiving

Dec 24th- Christmas Eve

Dec 25th- Christmas Day



MT. GILEAD UTILITIES

Payments can be made in person, placed in the drop box at Town Hall, US mail, online at mtgileadnc.com, or by phone at **844-241-6333**. Click at the bottom. You will need your account number for this service. **A \$3.95 convenience fee will apply.**

Blue Can Garbage Pick-up is every Thursday morning, usually very early. Please pull can to the road Wednesday evening and return it to a safe place away from the road after trash pick-up. Trash pick-up will be picked up the Friday after thanksgiving.

Bulk items such as household furniture, appliances and yard debris pick up is also available for utility customers. Leaves must be bagged. Seasonal loose leaf pick-up available. Please call the Town Hall to be added to the pick-up list. Please call Town Hall with concerns involving utilities, streets, and town facilities.

If you have a utility issue or water leak after hours or on weekends, please call (910) 571-7107 and have them dispatch Town of Mount Gilead Public Works



Dylan Haman, Town Manager
Lessie Jackson, Utility Billing Manager
Mollie Lee, Customer Service
Daniel Medley, Public Works Director
Talmedge Legrand, Police Chief
Non-emergency- Police/Public Works
MG Officer on Duty (non-emergency)

910-439-6687
910-210-0952
910-210-0953
910-210-0946
910-210-0955
910-571-7107
910-439-6711

FOR EMERGENCIES DIAL 911



**"Do what you can,
with what you've got,
where you are."
-Theodore Roosevelt**

Blue Can Schedule and Bulk Item Pick up

Blue can pick up is every Thursday morning EARLY! Make sure you put your can by the road Wednesday for them to pick up. On Thanksgiving they will be picking up the Friday after Thanksgiving.

If you need bulk items picked up be sure to call Town Hall at 910-439-5111 so we can put you on the list for Shawn Dykes to pick up.

Missing Out On The Newsletter?

below is a page to fill out that will not only keep your account with the town up to date, but will also give us a good email or address to send you the new Newsletters! We want to keep the community up with all updates with the upcoming events going on in the town!

Name _____

Street Address _____

Mailing Address _____

Cell Phone _____

Other Phone _____

Email _____

It is important to keep your information up to date. We use this information to notify you of high usage alerts and other important notices.

Town of Mount Gilead

Embracing the Vibrant Colors of Autumn

FALL FESTIVAL

MUSIC • FRIENDS • GAMES

More Info

MLEE@MTGILEADNC.COM

OCTO 21



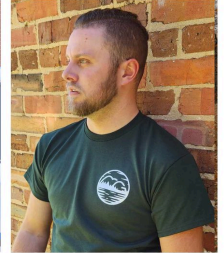
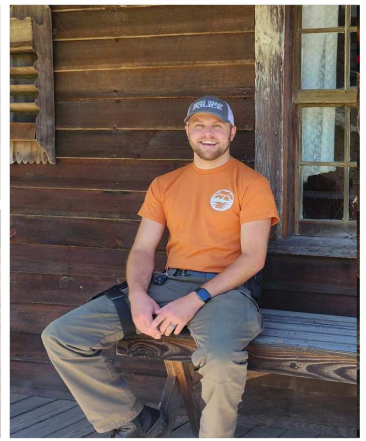
A special thanks to our
sponsors for the Fall
Festival!!

Jack and Sue Jordan,
McRae Industries, New
South Realty, Harris
Funeral Home, Edwards
Funeral Home, Tobe
Manufacturing, Wildmac,
David Wilder, Teddy
McRae

10am- Start of Festival (Mayor
opens)
10:05- Opening Prayer
10:10- High School present
arms followed by Pledge of
Allegiance
10:15- DJ starts music
10:30-12pm- 6 Miles Out
(Band)
12:00-1:00- DJ plays music
12:30-1:00- Dance Group
1:00-2:00- DJ plays music
2:00-2:30- Shawn Dykes
(Band)
2:30-2:45- DJ plays music
2:45-3:15- Acoustic Act
4:00-6:00- Next Level Band of
Charlotte (Band)



Date: October 21st,
2023
Time: 10am-6pm
Fun for the whole
family!



Fall Festival Shirts are on sale
at Town Hall for \$10.00 a
shirt.

All money from
the shirts go
towards the Fall
Festival!



THE TIMBERWOLF THROWDOWN



Montgomery Central High School
October 7th, 2023

Sensational event on October 7th - the Timberwolf Throwdown Band Competition. Gates opened at 2:30 PM, and tickets are just \$10 each.

Bands from all over the state will rock the field, offering a diverse musical experience. It will be a night of unforgettable performances.

Join us for Timberwolf fun, food, music, and memories!



**MCHS
ATHLETICS
50/50 RAFFLE**
\$10 EACH OR 3 FOR \$20

DRAWING WILL BE HELD ON
OCTOBER 27TH, 2023 DURING THE
VARSITY MCHS V. ASHEBORO
FOOTBALL GAME

PLEASE SEE A COACH OR ATHLETE TO
PURCHASE ONE

WINNER DOES NOT NEED TO BE PRESENT TO WIN

The poster features a yellow background with white icons for various sports: a baseball bat, a baseball, a football, a swimmer, a basketball, a tennis racket, a soccer ball, a volleyball, a tennis ball, and a tennis player. A small 'MC TIMBERWOLVES' logo is in the top right corner.



Christmas on the Square



Date: December 2nd,
2023

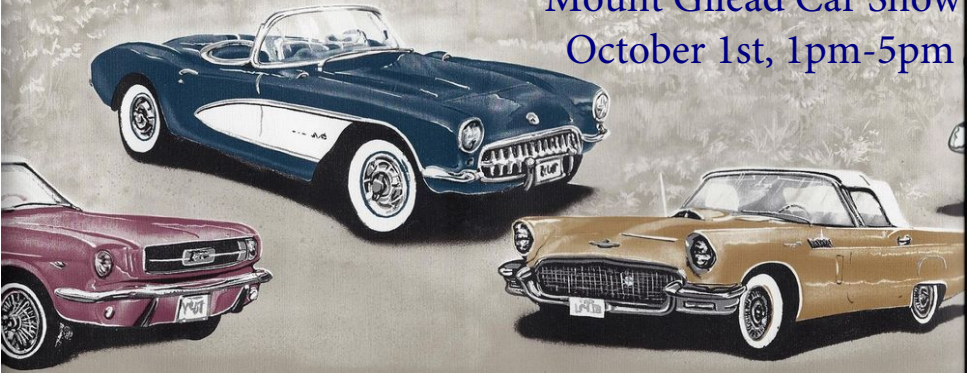
Time- 4pm-8pm

Location-
Downtown Mount
Gilead



Our annual downtown Christmas event is one of the best!
There will be a Fun Run, a Christmas parade, Santa, a DJ,
carolers, Christmas tree lighting, food trucks, I hear that the
Grinch will be making an appearance, a hayride...etc. You
won't want to miss this event!

Mount Gilead Car Show
October 1st, 1pm-5pm



Food
Trucks!



Downtown
Shops
Open





ITS BBQ TIME!!

**Join Mt. Gilead Fire Department on
Saturday, October 7th for BBQ Pork or
Smoked Chicken Plate Sale. 11am-6pm
(Plates 12.00)!**

**Plates contain BBQ Pork or Chicken,
Baked Beans, Slaw, Hush Puppies,
Desserts, Tea or Water!**

**A Silent Auction will be going on from
11am-5pm!**

**For more information contact
704-465-5628**



The Mount Gilead Museum Quilt Showing

Quilts will be displayed for the entire month of
October!

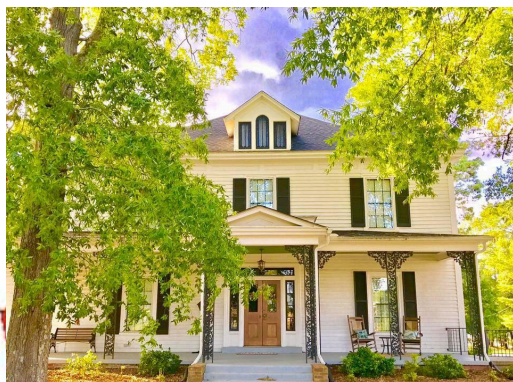
Finale event with refreshments
and fun will be October 29th
from 2pm-5pm located at 202
West Allenton St, Mount
Gilead, NC 27306!



To Submit a quilt for display, contact:

Laura Anderson: 910-220-0760

Phyllis Strider: 704-690-0756



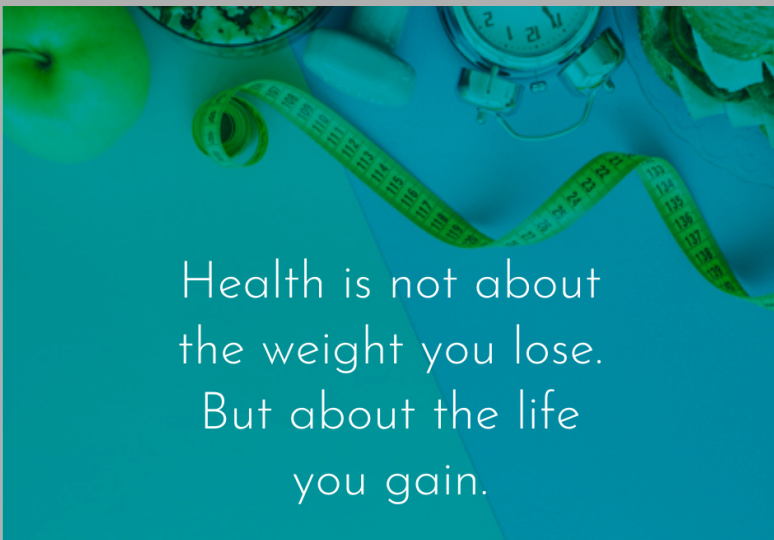
You asked and Fuzz N Fizz Woodworking delivered! The new hardware is now open!!
The entry to the hardware is on Industry Avenue in Mount Gilead! Their hours are Monday-Thursday 8am-5pm and Friday 8am-2pm.





Located at 102 North School St, Mount Gilead, NC 27306

Carolina Health and Hydration provides services such as Medically Supervised Weight-loss, Vitamin and Wellness Injections, IV Hydration Therapy, Wellness and Acute Care Medical Services, House visits, DOT Physical, Sport Physicals, Employment Physicals, Laser Hair Removal, Botox and Dermal Fillers, Skin Care products, and Laser Lipo/ Body Sculpting. If you would like to learn more their website is carolinahealthservices.com.





The Mount Gilead Police Department is asking for your support with their 7th Annual Shop with a Cop program! This program raises funds through public donations to help provide Christmas gifts for the less fortunate children in our community. You can mail contributions to the Mount Gilead Police Department, P.O. Box 325, Mount Gilead, NC 27306 or simply drop them off at Town Hall located at 110 West Allenton Street, Mount Gilead, NC 27306. If you have any questions please call the Police Department at 910-439-6711. Thank you for all your continued support!



Every **VOTE** *Counts!*

From now on the location for voting will be held at Highland Community Center located at 131 Hoffman Road, Mount Gilead, NC 27306. Remember your vote counts



Coats for Kids

As the time is nearing the colder months Mount Gilead Concerned Citizens, C&R Drug, and Mount Gilead Police Department are gathering coats, gloves, hats, and scarves for the children in the community. They are asking for the items to be new or lightly used for grades Pre-K- 6th Grade. There will be two drop off locations, they are Mount Gilead Police Department located at 123 North Main Street, and Town Hall located at 110 West Allenton Street. We would love for the community to come together for the children who might not be able to have something warm to wear this winter. This will start in November of 2023 and end in January 2024.



Explore the Beauty of The Gathering Garden at the Fall Festival!

Join us at the Mount Gilead Community Garden during the Fall Festival for an enchanting garden experience. Our Master Gardeners will be your guides as you stroll through our Fall garden, where you can see what's growing, ask questions, and get involved in our exciting project.

When: We will have two tours, one at 11am and another at 4pm as part of the Fall Festival

Where: At the corner of School St and Allenton Our Montgomery County Extension Master Gardener Volunteers are eager to share their knowledge and passion for gardening, making this an excellent opportunity to learn more about cultivating plants and sustainable practices. Whether you're a seasoned gardener or a novice, everyone is welcome to connect with nature, find inspiration, and become part of our vibrant community.

Don't miss the chance to be a part of the Mount Gilead Community Garden during the Fall Festival. We look forward to welcoming you to our Gathering Garden!





FUTURE BLOOD DONOR

HOPE begins with you.

A Blood drive will be held at Mount Gilead Elementary School's gym located at 100 School Street Mount Gilead, NC 27306 on October 31st from 10am-2pm. If you would like to schedule an appointment please visit RedCrossBlood.org and enter MountGileadElementary.

GIVE BLOOD

You can make a difference.



**American
Red Cross**

As many know Devon Little Jr. was involved in a very bad car accident back in August. We would like to ask for everyone to keep Devon and his family in your thoughts and prayers as he recovers from his accident.

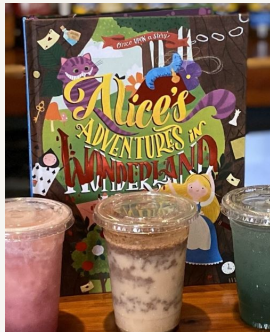


Photo of Devon Little Jr.



Don't be late

for a very important date
Storyteller Book Co and The
Speckled Paw are coming
together to host an Alice in
Wonderland Tea Party. The
party will be held September
30th at 5pm at 104 North
Main St. You can get Tickets
at The Speckled Paw.. This
will be a magical experience.





Cotton & Wood Fairy Hair; Thursday 21 come out and support!



The shops downtown will have a sidewalk sale from 10-2pm. Saturday, September 30th! Galactic Cravings will also be set up with their amazing lemonade! If you would love to have a spot to set up for a yard sale or be a vendor please contact AmberLynn or Shannon Browning! There are limited spaces!



Pumpkin Pie Recipe

Ingredients

3/4 cup sugar

1 1/2 teaspoons pumpkin pie spice

1/2 teaspoon salt

1 can (15 oz) pumpkin (not pumpkin pie mix)

1 1/4 cups evaporated milk or half and half

2 eggs, beaten

1 crust from 1 package (12 oz) frozen

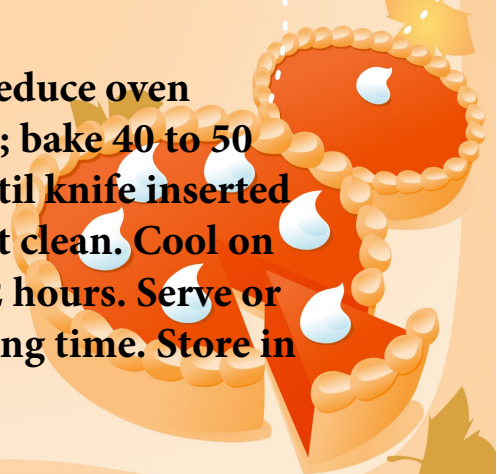
Pillsbury™ Deep Dish Pie Crusts (2 Count)

Steps

1 Heat oven to 425°F.

2 In large bowl, beat sugar, pumpkin pie spice, salt, pumpkin, evaporated milk and eggs with wire whisk until well blended. Place frozen pie crust onto cookie sheet. Pour filling into pie crust. Place filled pie crust on cookie sheet into preheated oven. .

3 Bake 15 minutes. Reduce oven temperature to 350°F; bake 40 to 50 minutes longer or until knife inserted near center comes out clean. Cool on cooling rack at least 2 hours. Serve or refrigerate until serving time. Store in refrigerator.



RYAN DUMAS PRESENTS

4TH ANNUAL

OCTOBER 31
6PM TO 9 PM

TRUNK -OR- TREAT

LOCATED AT THE CARWASH IN MOUNT GILEAD, NC

WE ENCOURAGE THE KIDS TO WEAR THEIR
COSTUMES AND MASKS WHILE THEY COLLECT
CANDY AND OTHER TREATS!

COME OUT AND SUPPORT &
GET INTO THE HALLOWEEN SPIRIT!



FREE

Montgomery County Partnership for Children

Touch-A-Truck

Facebook.com/
BrighterFutures

&  **25TH**
ANNIVERSARY
CELEBRATION



10:00 AM -
2:00 PM



10:00 - 11:00 AM
Quiet Hour - No horns,
sirens, or flashing lights!

Deaton-Monroe Park - Biscoe, NC



Emergency, Utility,
Construction, Farm
Equipment, Service/
Delivery vehicles,
and more!



*Especially for families with
children from birth - age 8.

910-576-2363



a partner in the
Smart Start network
Montgomery County
Partnership for Children



**Storyteller Book
Company is a new Indie
Bookstore that is in
Mount Gilead. You can
find it located inside the
Speckled Paw Coffee
Shop. 104 North Main
Street, Mount Gilead,
NC 27306.**



COMMUNITY IS THE
FOUNDATION TO
SUCCESS

-Kristen Jones





**Open House & Tour of Blackmer
Lodge No. 127**

Location: 109 South School Street

Since 1850 Blackmer Masonic Lodge has been a part of the Mt. Gilead community. The present Lodge building was built 75 years ago and is home to the Masons, the American Legion and the VFW.

The Masonic fraternity is open to men of good character from all walks of life, preparing them to make a positive impact upon their community, our state and the nation.

You are invited and welcomed for a free guided tour of the Masonic Lodge on October 21st during the Mt. Gilead Fall Festival.



Want to eat local? Look no further here
are the restaurants that are here in town!

Menu



Burger Shack
910-439-4204



Luna's Pizza
910-439-2185



Steve's Pizza
910-439-1764



Lefler's Place
910-439-5451



Mount Gilead Museum
Location: 202 W Allenton St.
Mount Gilead

Come relive old memories and make some new memories while you're here. Sled your way down to the Mount Gilead Museum on Sunday December 3rd from 3pm-5pm. There will be all sorts of holiday refreshments.



*It's not what we
say about our
blessings, but how
we use them that
is the true
measure of our
Thanksgiving.
- W.T Purkiser*